

DATA LINK

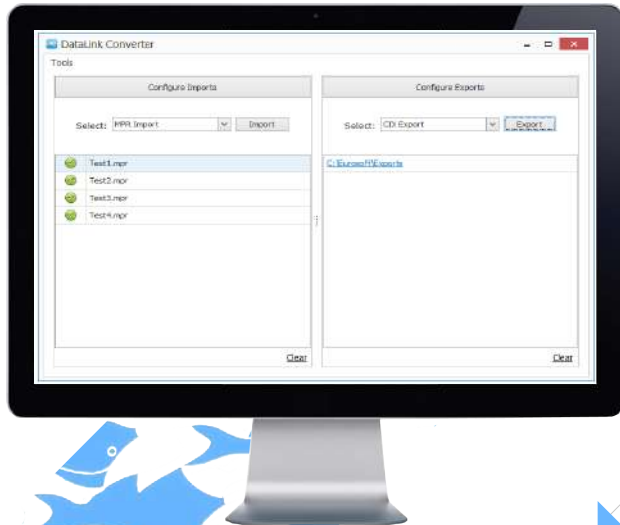
CNC Data Conversion Tool

Features:

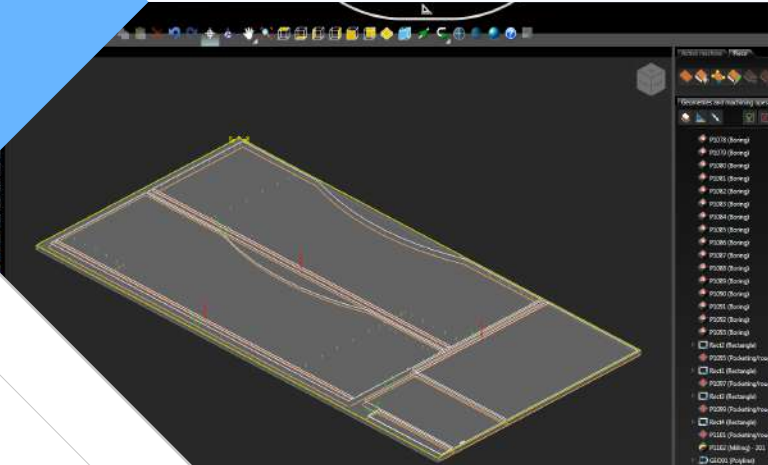
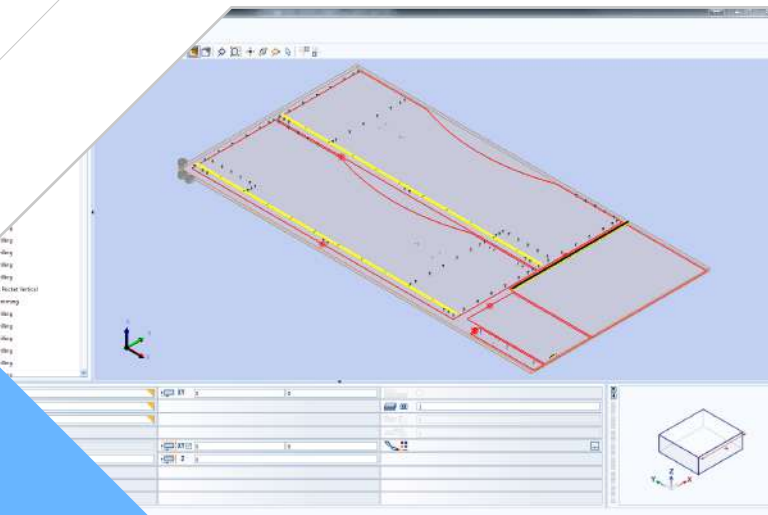
- + Convert existing CNC programs from one format to another
- + Quickly migrate existing programs for use with a new machine
- + Tool mapping interface
- + Multiple output types in a single run

Examples:

- + Machine file formats (panel saws and routers) converted into another machine file format
- + DXF converted to a machine file format



Example:
The same source file was used to make the .MPR file for WoodWOP and .CIX file for bSolid below



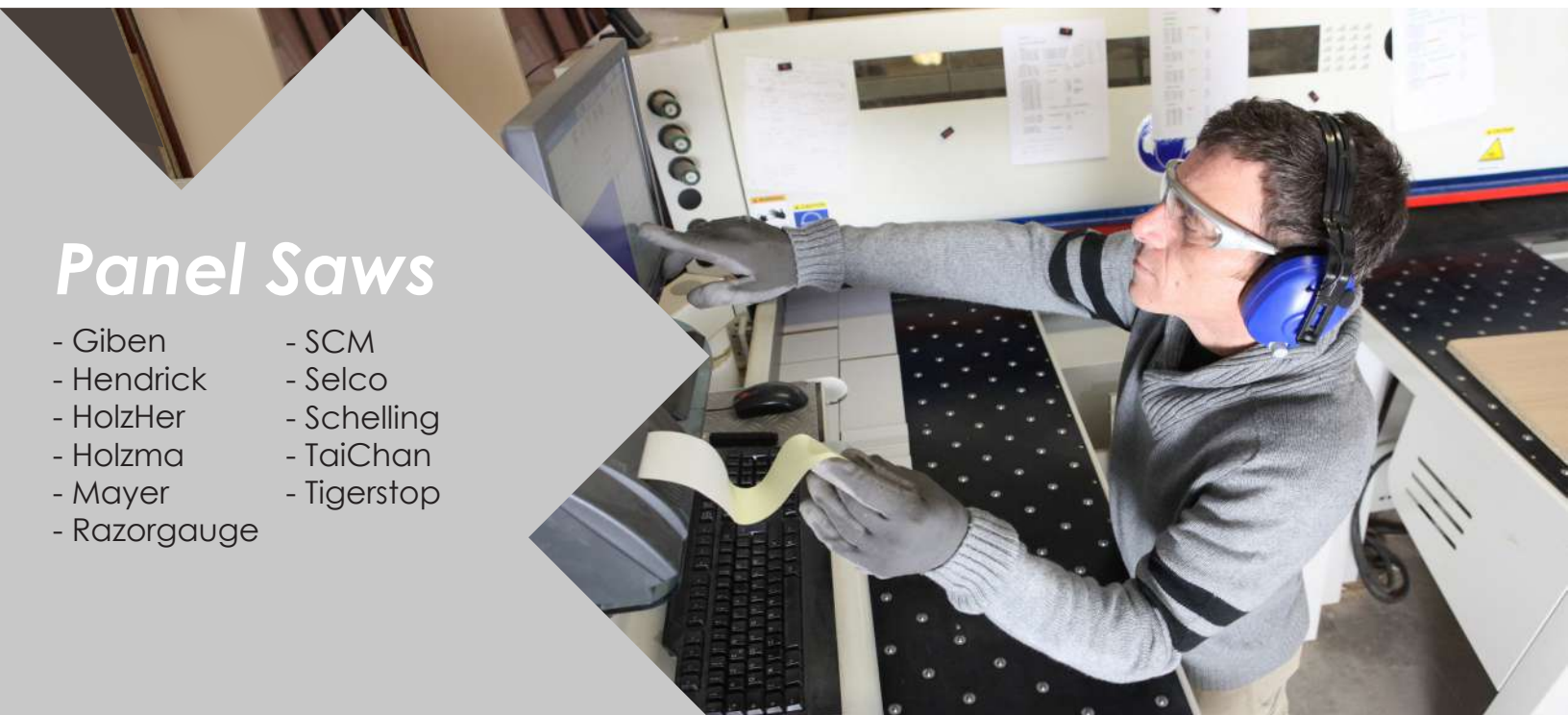
Supported Formats

DataLink bridges the gap between engineering, manufacturing software and the shop floor and, in many cases, is financially more attractive than buying additional post-processors for existing software.



Routers

- Anderson
- Biesse
- Busellato
- CMS
- Heian
- HolzHer
- IMA
- Komo
- Morbidelli
- SCM
- Shoda
- Weeke



Panel Saws

- Giben
- Hendrick
- HolzHer
- Holzma
- Mayer
- Razorgauge
- SCM
- Selco
- Schelling
- TaiChan
- Tigerstop

EUROSOFT

Innovative Software for Manufacturing



Eurosoft, Inc.: Providing innovative software to the manufacturing sector for 20 years. Software that improves productivity, automates production and provides greater insight into the manufacturing environment. From off-the-shelf solutions to personalized support and consultation to multi-vendor projects... **We've got your software solution.**

Contact us at sales@eurosoftinc.com or call **919.468.3003**
Visit us online at: www.eurosoftinc.com